

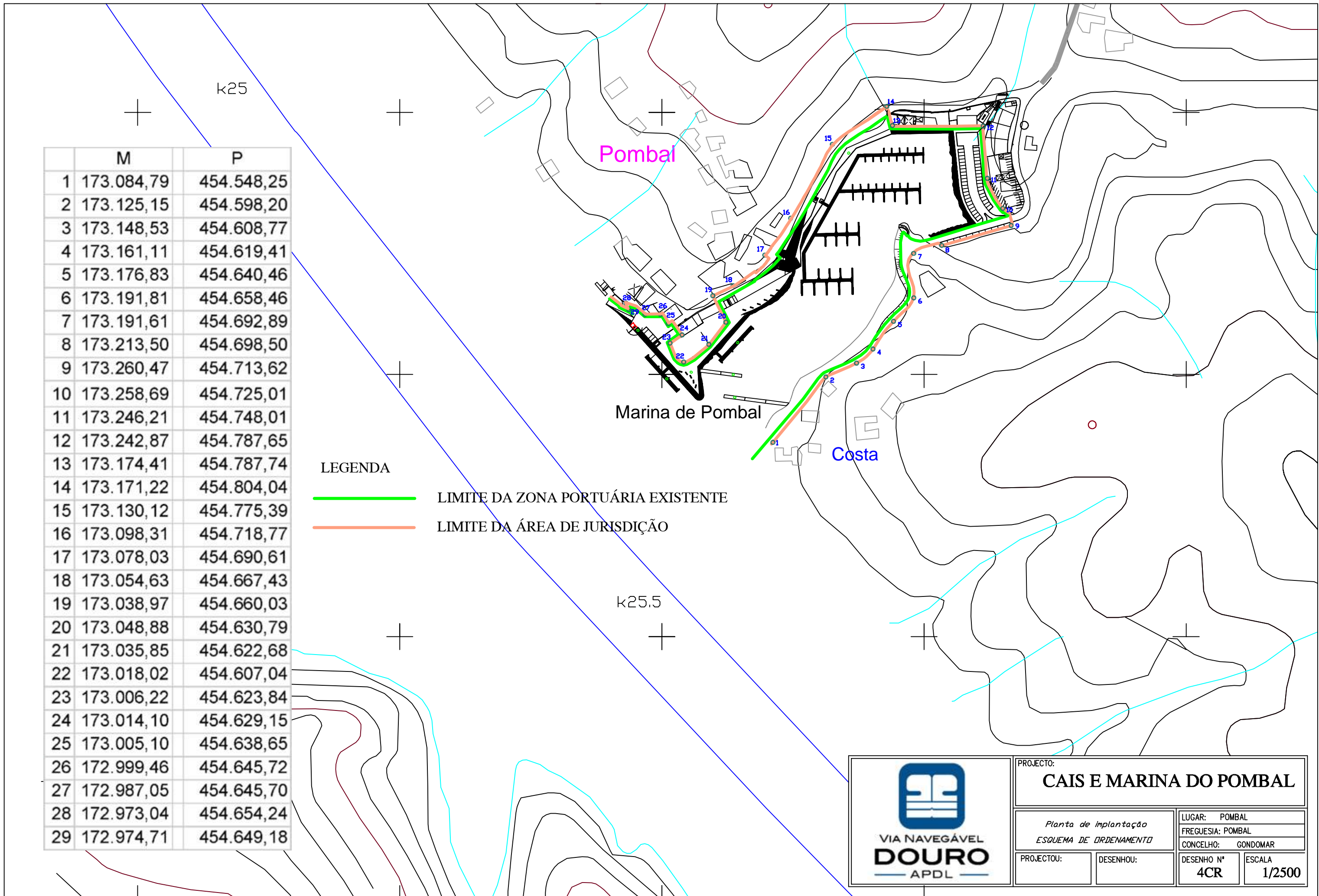


	M	P
1	173.084,79	454.548,25
2	173.125,15	454.598,20
3	173.148,53	454.608,77
4	173.161,11	454.619,41
5	173.176,83	454.640,46
6	173.191,81	454.658,46
7	173.191,61	454.692,89
8	173.213,50	454.698,50
9	173.260,47	454.713,62
10	173.258,69	454.725,01
11	173.246,21	454.748,01
12	173.242,87	454.787,65
13	173.174,41	454.787,74
14	173.171,22	454.804,04
15	173.130,12	454.775,39
16	173.098,31	454.718,77
17	173.078,03	454.690,61
18	173.054,63	454.667,43
19	173.038,97	454.660,03
20	173.048,88	454.630,79
21	173.035,85	454.622,68
22	173.018,02	454.607,04
23	173.006,22	454.623,84
24	173.014,10	454.629,15
25	173.005,10	454.638,65
26	172.999,46	454.645,72
27	172.987,05	454.645,70
28	172.973,04	454.654,24
29	172.974,71	454.649,18

LEGENDA

-  LIMITE DA ZONA PORTUÁRIA EXISTENTE
-  LIMITE DA ÁREA DE JURISDIÇÃO



PROJECTO:			
<b>CAIS E MARINA DO POMBAL</b>			
<i>Planta de Implantação</i>		LUGAR: POMBAL	
<i>ESQUEMA DE ORDENAMENTO</i>		FREGUESIA: POMBAL	
PROJECTOU:		CONCELHO: GONDOMAR	
DESENHOU:		DESENHO N°	ESCALA
		<b>4CR</b>	<b>1/2500</b>